



Project : Intumescent Take-Off - Sample report

Client : xxxxxxx

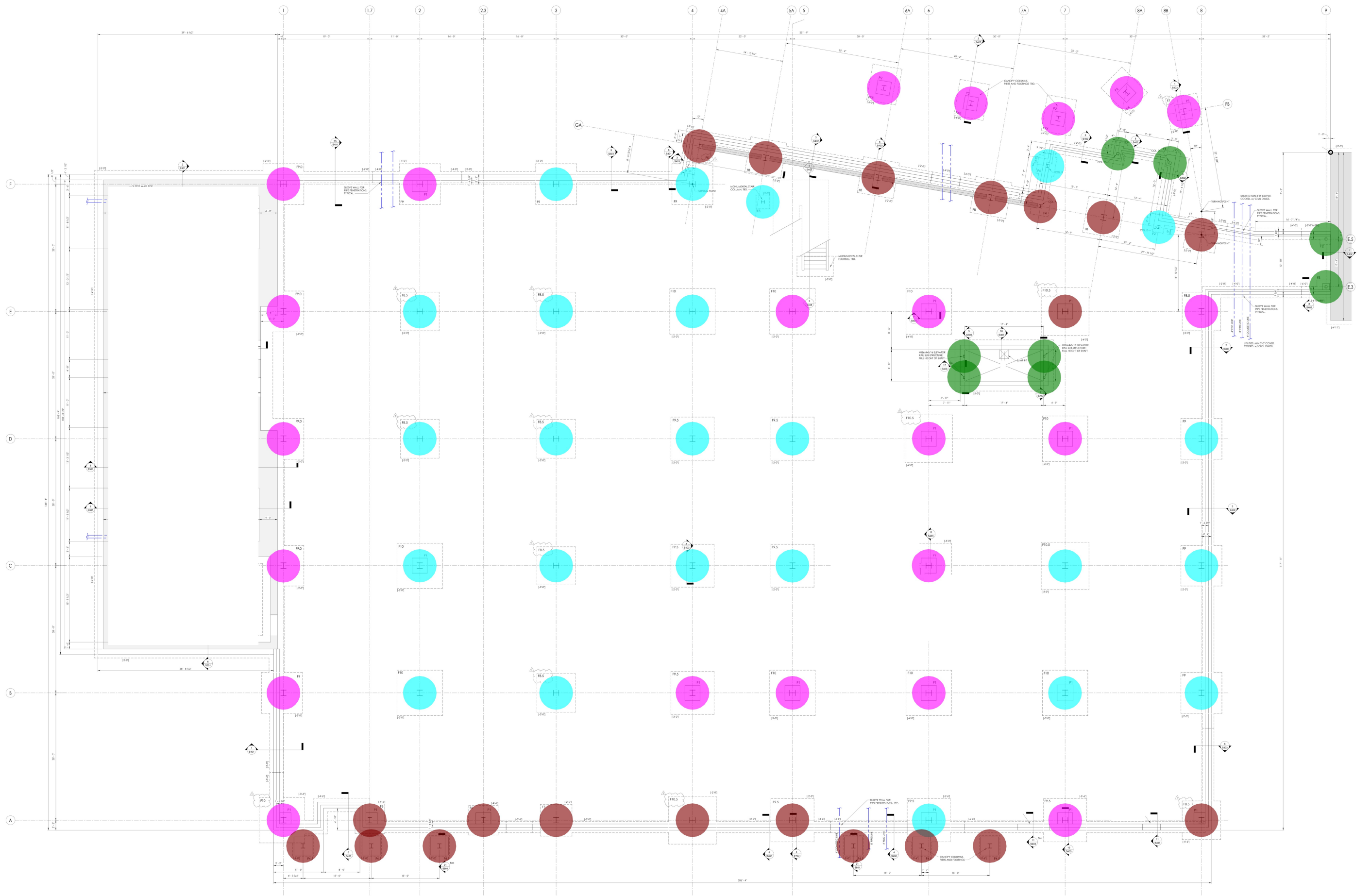
Date : MM/DD/YYYY

Page : 1 of 1

Hourly Rating : 1 Hour

Steelwork Env.: Internal

Description	Steel Designation	Fire Exposure	Section Usage	Fire Rating Hour(s)	Hp/A	W/D	Quantity	Length (FT)	Area (Sq. FT)	Intumescent Product	Intumescent DFT (Mils)	Color	Notes
1 st Floor Beams	W24x68	3 Sided	Beam	1	142	0.94	1	813.74	4924			Yellow	
1 st Floor Beams	W21x44	3 Sided	Beam	1	180	0.74	1	1512.58	7479.906			Teal	
1 st Floor Beams	W14x22	3 Sided	Beam	1	250	0.54	1	413.44	1421.31			Red	
1 st Floor Beams	W18x35	3 Sided	Beam	1	199	0.67	1	676.89	2939.38			Blue	
1 st Floor Beams	W12x19	3 Sided	Beam	1	251	0.53	1	249.91	738.17			Purple	
1 st Floor Beams	HSS10x4x5/16	4 Sided	Beam	1	131	0.3	1	9.09	20.401			Light Green	
1 st Floor Beams	W10x15	3 Sided	Beam	1	277	0.48	1	16.71	43.179			Dark Green	
1 st Floor Beams	W18x40	3 Sided	Beam	1	175	0.77	1	82.98	363.313			Orange	
1 st Floor Beams	W14x30	3 Sided	Beam	1	207	0.65	1	21.99	85.327			Light Orange	
1 st Floor Beams	W30x90	3 Sided	Beam	1	132	1.01	1	514.69	3780.57			Dark Orange	
1 st Floor Beams	W16x31	3 Sided	Beam	1	203	0.66	1	92.28	362.582			Light Purple	
1 st Floor Beams	W8x13	3 Sided	Beam	1	277	0.48	1	43.48	97.847			Cyan	
1 st Floor Beams	W12x16	3 Sided	Beam	1	293	0.46	1	9.02	26.319			Dark Red	
1 st Floor Beams	W14x26	3 Sided	Beam	1	213	0.63	1	9.98	34.674			Purple	
1 st Floor Beams	W30x116	3 Sided	Beam	1	103	1.3	1	160.64	1194.81			Cyan	
1 st Floor Beams	W24x55	3 Sided	Beam	1	162	0.83	1	34.39	190.787			Light Blue	
1 st Floor Beams	W18x50	3 Sided	Beam	1	153	0.88	1	25.01	119.005			Dark Blue	
1 st Floor Beams	W30x124	3 Sided	Beam	1	97	1.38	1	54.08	403.86			Pink	
1 st Floor Beams	HSS12x8x5/8	4 Sided	Beam	1	66	0.59	1	14.06	44.348			Light Green	
1 st Floor Columns	W14x132	4 Sided	Column	1	87	1.54	22	12	1889.36			Magenta	
1 st Floor Columns	W14x68	4 Sided	Column	1	130	1.03	24	12	1587.77			Cyan	
1 st Floor Columns	W14x90	4 Sided	Column	1	125	1.07	20	12	1681.79			Dark Red	
1 st Floor Columns	HSS6x4x5/16	4 Sided	Column	1	133	0.296	8	12	151.46			Dark Green	
							Total	4802.96	29580.17				



FOUNDATION PLAN
1/2" = 1'-0"

BILL OF MATERIALS - 1st FLOOR INTUMESCENT

• W14x132 - 12' - 4 Sided - Column	22.0 EA	●
• W14x68 - 12' - 4 Sided - Column	24.0 EA	●
• W14x90 - 12' - 4 Sided - Column	20.0 EA	●
• HSS6x4x5/16 - 12' - 4 Sided - Column	8.0 EA	●

BILL OF MATERIALS - 1st FLOOR INTUMESCENT

W24x68 - 3 Sided - Beam	813.7 FT
W21x44 - 3 Sided - Beam	1512.6 FT
W18x35 - 3 Sided - Beam	676.9 FT
W14x22 - 3 Sided - Beam	413.4 FT
W12x19 - 3 Sided - Beam	249.9 FT
HSS10x4x5/16 - 4 Sided - Beam	9.1 FT
W10x15 - 3 Sided - Beam	16.7 FT
W18x40 - 3 Sided - Beam	83.0 FT
W14x30 - 3 Sided - Beam	22.0 FT
W30x90 - 3 Sided - Beam	514.7 FT
W16x31 - 3 Sided - Beam	92.3 FT
W8x13 - 3 Sided - Beam	43.5 FT
W12x16 - 3 Sided - Beam	9.0 FT
W14x26 - 3 Sided - Beam	10.0 FT
W30x116 - 3 Sided - Beam	160.6 FT
W24x55 - 3 Sided - Beam	34.4 FT
W18x50 - 3 Sided - Beam	25.0 FT
W30x124 - 3 Sided - Beam	54.1 FT
HSS12x8x5/8 - 4 Sided - Beam	14.1 FT

